



Light up
your care space

Anteca LIT ET

Care environments influence patient outcomes and satisfaction. We understand this relationship better and continuously work to make hospitals a better healing environment, presenting Anteca LIT with all new contrasting color language. It invokes visual vigour in the built environments. While the pastel blue panels create a sense of serenity, the grey underbed framework steers focus on the patient. The resultant complimenting color dynamics adds excitement to the care space and assures intrinsic Midmark engineering advantage.



Anteca LIT ES



Anteca LIT HS



*The product images shown are for illustrative purpose only and not be an exact representation of the product. Accessories shown in the product image may not be part of the standard configuration.

We are interested in growing relationship



Technical Specifications

Overall Dimension*	2140 mm x 1020 mm (L x W)
Platform Frame*	2080 mm x 955 mm (L x W)
Mattress Platform*	1890 mm x 860 mm (L x W)
Mattress Platform Height* (Without Mattress)	450 mm to 820 mm
Backrest**	0° - 70°
Kneerest**	0° - 45°
Trendelenburg**	0° - 17°
Reverse Trendelenburg**	0° - 17°
Safe working load	250 Kgs
Patient Weight Bearing Capacity^	200 Kgs

Electrical Parameters

Power in (Mains Power Supply)	Nominal 240 VAC
Operating range with battery	100VAC to 240VAC 50/60 Hz, Max 2A
Protection Voltage	100 – 200 VAC
Liquid Ingress Protection	IPX6
Electrical shock protection	Class I
Degree of Shock protection	Type B
Duty Cycle	10 % (Two minutes for every eighteen minutes)

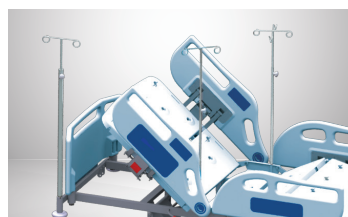
Variants

Features	Anteca LIT ET	Anteca LIT ES	Anteca LIT HS
Control panels	Embedded + Wired handset	Embedded + Wired handset	Wired handset
Emergency head down	✓	✓	
Auto contour	✓	✓	
125 mm diameter high grade synthetic body castors	Twin wheel with central locking mechanism	Single wheel with diagonal locking mechanism	Single wheel with diagonal locking mechanism
Night lamp	✓	✓	
Provision for nurse call integration	✓	✓	

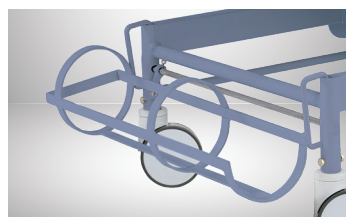
• All variants are available with X-Ray permeable backrest (XR) feature as an add-on accessory, which are factory fitted.

* ±10 mm Engineering variation. ** ± 5° Engineering variation. ^When bed is configured with standard accessories. #Factory fitted.

Add-On Accessories



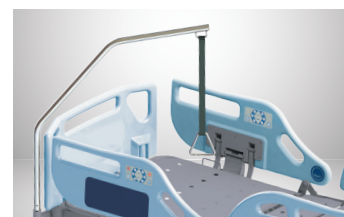
Heavy Duty and Telescopic IV Pole



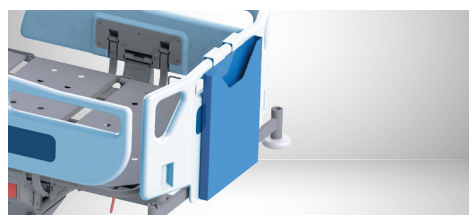
O2 Cylinder Cage



Orthopedic Traction Pulley



Heavy Duty SS Lifting Pole



Modular Chart Holder



Bed Extension#



Battery Backup#

Standard Features

- One touch key for cardiac chair, auto CPR
- Motorised backrest, kneerest, height adjustment, trendelenburg & reverse trendelenburg
- Dual side manually operated CPR
- Angle indicator for backrest, trendelenburg & reverse trendelenburg
- Full length polymer moulded split type safety side rails
- Polymer moulded head & foot panels, easily removable without using any tools
- Four corner safety rubber buffers
- Inbuilt SMPS
- Four section metallic perforated top
- Urine bag holder
- SS heavy duty IV pole

Safety Standards

General safety for medical beds	IEC 60601-2-52
General safety for medical electrical equipment	IEC 60601-1-1
EMI/EMC	IEC 60601-1-2

Accessories and color shown in the picture may not be part of standard configuration. Technical alterations reserved in view of our continuous improvements. Midmark India Pvt. Ltd. is the licensed user of the trademark "Midmark India" and the logo. Reproduction of this catalogue in any form is liable for legal action.

Midmark (India) Private Limited

Head Office: Art Guild House, FOF, B-16, "B" Wing, 4th floor, Phoenix Market City, LBS Road, Kurla (West), Mumbai - 400 070
Toll Free: 1800 22 8020 | Tel: +91 22 4915 3000 | Fax: +91 22 4915 3100 | www.midmark.in | india@midmark.com

Anteca LIT: 02:19.05.23

