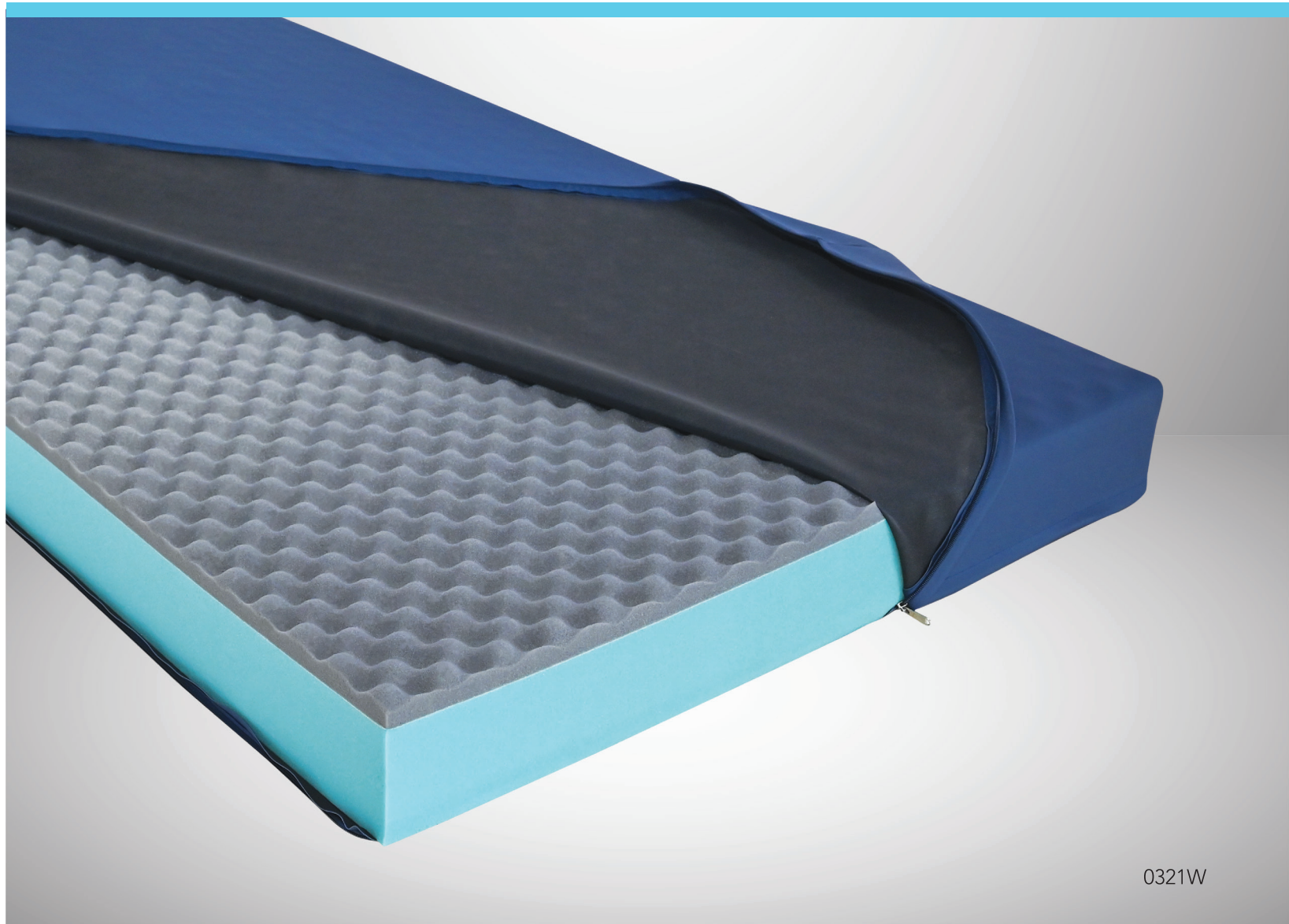


0321W

Dual layer profile mattress



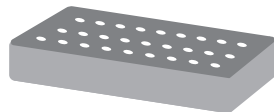
0321W

Support perfected; comfort maximized!

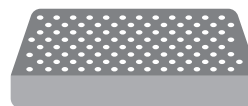
Every patient deserves the comfort of a peaceful rest. In the hospital, a comfortable mattress is not just a luxury; it's a vital element of compassionate care. It eases pain, supports healing, and provides solace in times of vulnerability. We understand that your patients are at the heart of your caregiving, and 0321W is designed to enhance their comfort because comfort is a form of care too.



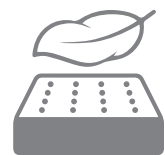
Antibacterial, antifungal,
and flame-retardant PVC cover



Dual layer profile – Firm at
the bottom, soft on the top

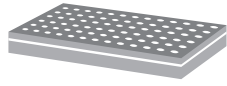


Convoluted contour



Comfort and support

*The product images shown are for illustrative purpose only and not be an exact representation of the product. Accessories shown in the product image may not be part of the standard configuration.



Dual Layer

- 01 Our soft top layer promotes enhanced quality sleep, while the firm bottom layer ensures proper body support for well-being.
- 02 With a durable soft top and firm bottom, our mattress maintains its support and long-lasting comfort even with extended use.

Enhancing patient comfort and caregiver peace of mind



Care for Comfort

- 01 Safeguards the mattress' integrity, preventing uncomfortable sinking.
- 02 Adapts to the patient's body, ensuring their comfort and rest.



Supportive Resilience

- 01 Bounces back to its original shape, preventing any sagging that can disrupt sleep.
- 02 Offers consistent, unwavering support even during extended use.



Durability & Strength

- 01 Combines forces to endure tough caregiving conditions, providing long-lasting performance.
- 02 Anticipate an extended lifespan, reducing the need for frequent replacements.

Protective Mattress cover

- 01 Its flame-retardant features enhance safety for everyone.
- 02 Water-resistant, it shields against spills and accidents, keeping the mattress safe.
- 03 Maintains its strength and flexibility, even when exposed to 1% sodium hypochlorite (NaOCl) for extended periods, ensuring your confidence in its long-lasting durability.

Technical specifications

Mattress Dimension*	1920 mm L x 870 mm W x 120 mm T
Section	Single
Rexine	PVC
Foam	Polyether-based polyurethane foam
Density*	28 Kg/m ³ ± 1
Resilience*	≥ 40%
Tensile Strength*	> 1 KgF/cm ²
Elongation*	≥ 120%

* ±10 mm Engineering variation.

Midmark (India) Private Limited

Head Office: Art Guild House, FOF, B-16, "B" Wing, 4th floor, Phoenix Market City, LBS Road, Kurla (West), Mumbai - 400 070
Toll Free: 1800 22 8020 | Tel: +91 22 4915 3000 | Fax: +91 22 4915 3100 | www.midmark.in | india@midmark.com

0321W: 00:14.09.23

